

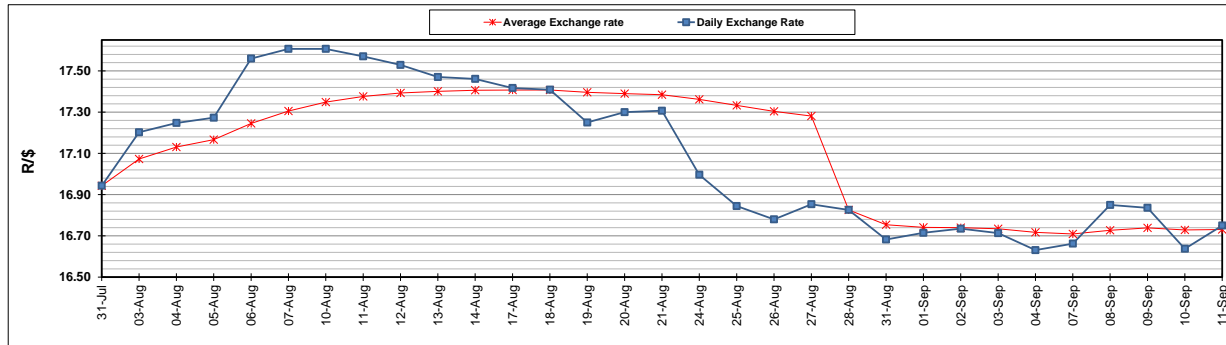
	PETROL 95 ULP	PETROL 93 ULP & LRP	DIESEL 0.05%	DIESEL 0.005%	ILL. PAR.
GAUTENG PUMP PRICE (SA c/l) AS FROM 02/09/2020	1,518.000	1,489.000	-	-	-
WHOLESALE PRICE (SA c/l) AS FROM 02/09/2020	-	-	1,327.560	1,331.960	716.828
SINGLE NATIONAL MAXIMUM RETAIL PRICE	-	-	-	-	899.000
BASIC FUEL PRICE - 11/09/2020 (SA c/l)	510.574	499.922	468.252	469.399	415.795
PRESS RELEASE CONTRIBUTION TO BFP 02/09/2020 - 11/09/2020 (SA c/l)	565.470	546.470	576.630	581.030	512.128
UNIT OVER/(UNDER) RECOVERY - 11/09/2020 (SA c/l)	54.896	46.548	108.378	111.631	96.333
AVERAGE BASIC FUEL PRICE 28/08/2020 - 11/09/2020	532.131	522.980	499.341	501.315	437.671
AVERAGE UNIT OVER/(UNDER) RECOVERY 28/08/2020 - 11/09/2020	34.511	24.663	83.017	85.442	81.548

ANALYSIS MOVEMENT OF AVERAGE OVER/(UNDER) RECOVERY

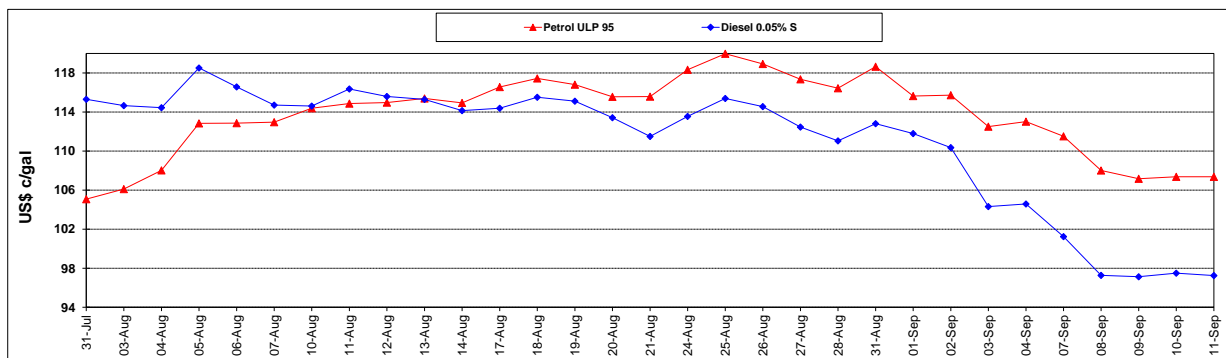
	PETROL 95	PETROL 93	DIESEL 0.05%	DIESEL 0.005%	ILL. PAR.
- MOVEMENT IN INTERNATIONAL PRODUCT PRICES	17.000	7.452	66.583	68.944	67.145
- MOVEMENT IN EXCHANGE RATE	17.512	17.211	16.433	16.498	14.403
AVERAGE UNIT OVER/(UNDER) RECOVERY 28/08/2020 - 11/09/2020	34.511	24.663	83.017	85.442	81.548

R/\$ EXCHANGE RATE - (R/\$16.7500 - 11/09/2020)

EXCHANGE RATE USED IN BASIC FUEL PRICE



INTERNATIONAL PRODUCT PRICES OF BASKET USED IN BASIC FUEL PRICE



BASIC FUEL PRICE IN SA CENTS PER LITRE

